



## BREEZE FARMHOUSE 72



### **BREEZE FARMHOUSE 72** Model number: 38SLC28724BH20

**4 beds • 2 baths • 2016 sq.ft. • 28' width • 72' depth**

Our home building facilities invest in continuous product and process improvements. Plans, dimensions, features, materials, specifications and availability are subject to change without notice or obligation. Renderings and floor plans are representative likenesses of our homes and may differ from the actual homes. We invite you to tour a Home Center near you and inspect the highest value in quality housing available or call (903) 438-0820 to speak with a Home Consultant. Copyright 2017, CMH. All rights reserved.

<https://www.claytonofsulphursprings.com>

### CLAYTON HOMES- SULPHUR SPRINGS

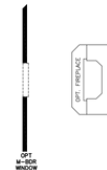
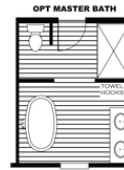
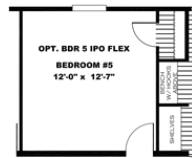
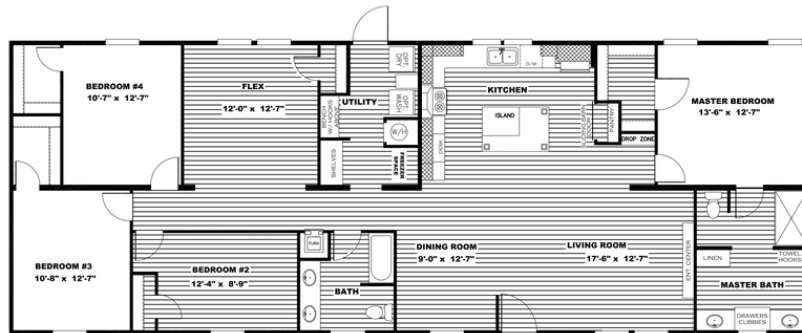
2600 WEST INDUSTRIAL  
SULPHUR SPRINGS, TX 75482

Monday - Thursday: 9am - 5:30pm  
Friday: 9am - 5:30pm  
Saturday: 9am - 5pm  
Sunday: Closed

(903) 438-0820



# BREEZE FARMHOUSE 72



1896 SQ. FT.  
Model # 38SLC28724B  
28 x 72 Solution  
Sheet # 30M157

## BREEZE FARMHOUSE 72 Model number: 38SLC28724BH20

4 beds • 2 baths • 2016 sq.ft. • 28' width • 72' depth

Our home building facilities invest in continuous product and process improvements. Plans, dimensions, features, materials, specifications and availability are subject to change without notice or obligation. Renderings and floor plans are representative likenesses of our homes and may differ from the actual homes. We invite you to tour a Home Center near you and inspect the highest value in quality housing available or call (903) 438-0820 to speak with a Home Consultant. Copyright 2017, CMH. All rights reserved.

<https://www.claytonofsulphursprings.com>

### CLAYTON HOMES- SULPHUR SPRINGS

2600 WEST INDUSTRIAL  
SULPHUR SPRINGS, TX 75482

Monday - Thursday: 9am - 5:30pm  
Friday: 9am - 5:30pm  
Saturday: 9am - 5pm  
Sunday: Closed

(903) 438-0820