



## THE GALVESTON PREFABULOUS SALE

**3 beds • 2 baths • 1152 sq.ft. • 16' width • 72' depth**

Model number: 45HOU16723BH18

Our home building facilities invest in continuous product and process improvements. Plans, dimensions, features, materials, specifications and availability are subject to change without notice or obligation. Renderings and floor plans are representative likenesses of our homes and may differ from the actual homes. We invite you to tour a Home Center near you and inspect the highest value in quality housing available or call (903) 438-0820 to speak with a Home Consultant. Copyright 2017, CMH. All rights reserved.

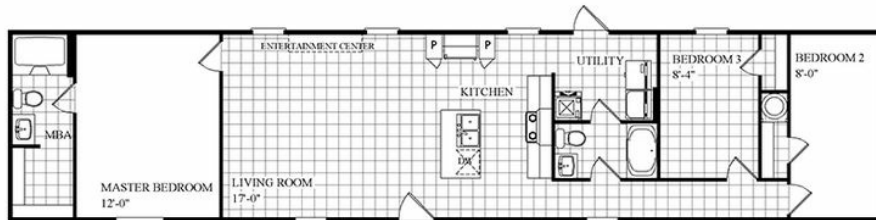
<https://www.claytonofsulphursprings.com>

### CLAYTON HOMES- SULPHUR SPRINGS

2600 WEST INDUSTRIAL  
SULPHUR SPRINGS, TX 75482

Monday - Thursday: 9am to 6pm  
Friday: 9am to 6pm  
Saturday: 9am to 5pm  
Sunday: Closed

(903) 438-0820



## THE GALVESTON PREFABULOUS SALE

Model number: 45HOU16723BH18

**3 beds • 2 baths • 1152 sq.ft. • 16' width • 72' depth**

Our home building facilities invest in continuous product and process improvements. Plans, dimensions, features, materials, specifications and availability are subject to change without notice or obligation. Renderings and floor plans are representative likenesses of our homes and may differ from the actual homes. We invite you to tour a Home Center near you and inspect the highest value in quality housing available or call (903) 438-0820 to speak with a Home Consultant. Copyright 2017, CMH. All rights reserved.

<https://www.claytonofsulphursprings.com>

### CLAYTON HOMES- SULPHUR SPRINGS

2600 WEST INDUSTRIAL  
SULPHUR SPRINGS, TX 75482

Monday - Thursday: 9am to 6pm  
Friday: 9am to 6pm  
Saturday: 9am to 5pm  
Sunday: Closed

(903) 438-0820